

Florida Aviation Career Training, Inc.

List of Revisions

FACT Flight Instructor Certification Course 14 CFR 141 Appendix F
Revision 3
07/20/2025

Page	Change
TCO Pages ALL	Update footer to Rev 3 & updated date
TCO Page 3	Update number and size of dry erase boards and added weather briefing station location to classroom under the Ground Instructional Facilities section Under Airport Facilities Section removed location of briefing room "off lobby" and changed location of phone line to lobby/dispatch Remove PA28R-201 and Beechcraft model 24R from Training Aircraft

Florida Aviation Career Training, Inc.

FLIGHT INSTRUCTOR CERTIFICATION COURSE TRAINING COURSE OUTLINE

Florida Aviation Career Training, Inc. (FACT) is located on Northeast Florida Regional Airport (St. Augustine) at 4900 US1 N, Suite 200, St. Augustine, FL 32095

**COURSE TITLE: Flight Instructor Certification Course
 – Airplane Single Engine**

This training course outline meets all the requirements for the Flight Instructor Certification Course- Airplane Single-engine contained in Appendix F of 14 CFR Part 141.

The Jeppesen Flight Instructor Training Syllabus will be utilized, and is included with this outline, contains a separate ground training section and a flight training section which are to be taught concurrently.

Course Enrollment Requirements:

Students enrolling in this course must possess at a minimum a commercial pilot certificate with an airplane category single engine class rating.

Course Objective:

The student will obtain the knowledge, skill and aeronautical experience necessary to meet the requirements for an Flight Instructor Certificate with an airplane rating and a single engine class rating.

Course Completion Standards:

The student must demonstrate through knowledge tests, flight tests and show through appropriate records that he/she meets the knowledge, skill and experience necessary to obtain a Flight Instructor Certificate with an airplane category rating and a single engine class rating.

Florida Aviation Career Training, Inc.

Ground Instructional Facilities:

Primary ground instruction facilities are a training room of approximately 15' by 30' equipped with tables and chairs adequate to accommodate 15 students as depicted in Figure A. This room is also equipped with one 48" by 96" and two 48" by 36" dry erase boards and a TV/DVD unit for presentation of video training programs. The weather briefing station is also located in this room. The classroom is well lit and thermostatically controlled, conforms to local building, sanitation and health codes and is designed so the occupants will not be disturbed by activities in other rooms or by flight and maintenance operations at the airport.

Airports:

Northeast Florida Regional Airport (St. Augustine) is the main base for training in this course. The airport has three hard surface runways, a control tower which operates between 7AM and 9PM local time and meets the requirements for 14 CFR Part 141 Day/Night operations.

Airport Facilities:

Northeast Florida Regional Airport (St. Augustine) meets the requirements of 14 CFR Part 141.38. FACT has a pilot briefing area located for use exclusively by students and regular customers of FACT. A PC is in this room for access to DUATS and various on-line weather sites. Flight planning documents, authorized practice area and local course rules for operations are also displayed in this room. The lobby/ dispatch area is equipped with a telephone for calls to Flight Service for weather briefing, NOTAMS and filing/closing flight plans.

Aircraft:

Cessna Models 152, 172 & Piper Model PA28-161, are utilized for flight training in this course. These aircraft meet the requirements of 14 CFR Part 141.39. These aircraft are also equipped for Day/Night operations in accordance with 14 CFR Part 91.205 (a), (b), and (c).

Florida Aviation Career Training, Inc.

Personnel:

The Chief Instructor, Assistant Chief Instructor, and Check Instructors are designated in Operation Specification A006 Training Personnel Table 1, 2, and 3 for Florida Aviation Career Training, Inc. and meet the requirements of 14 CFR 141.35/.36/.37 as appropriate.

Flight Instructors:

Flight instructors for this course shall hold a Flight Instructor Certificate with Airplane Single-engine rating and meet the requirements of 14 CFR Part 61.195 (h) (3). Each flight instructor must also pass an oral and flight check with the Chief/Ass't Chief Instructor prior to teaching this course.

Grading:

Grade assignments for the individual flight lessons will utilize the method provided in the Jeppesen student record folder as follows:

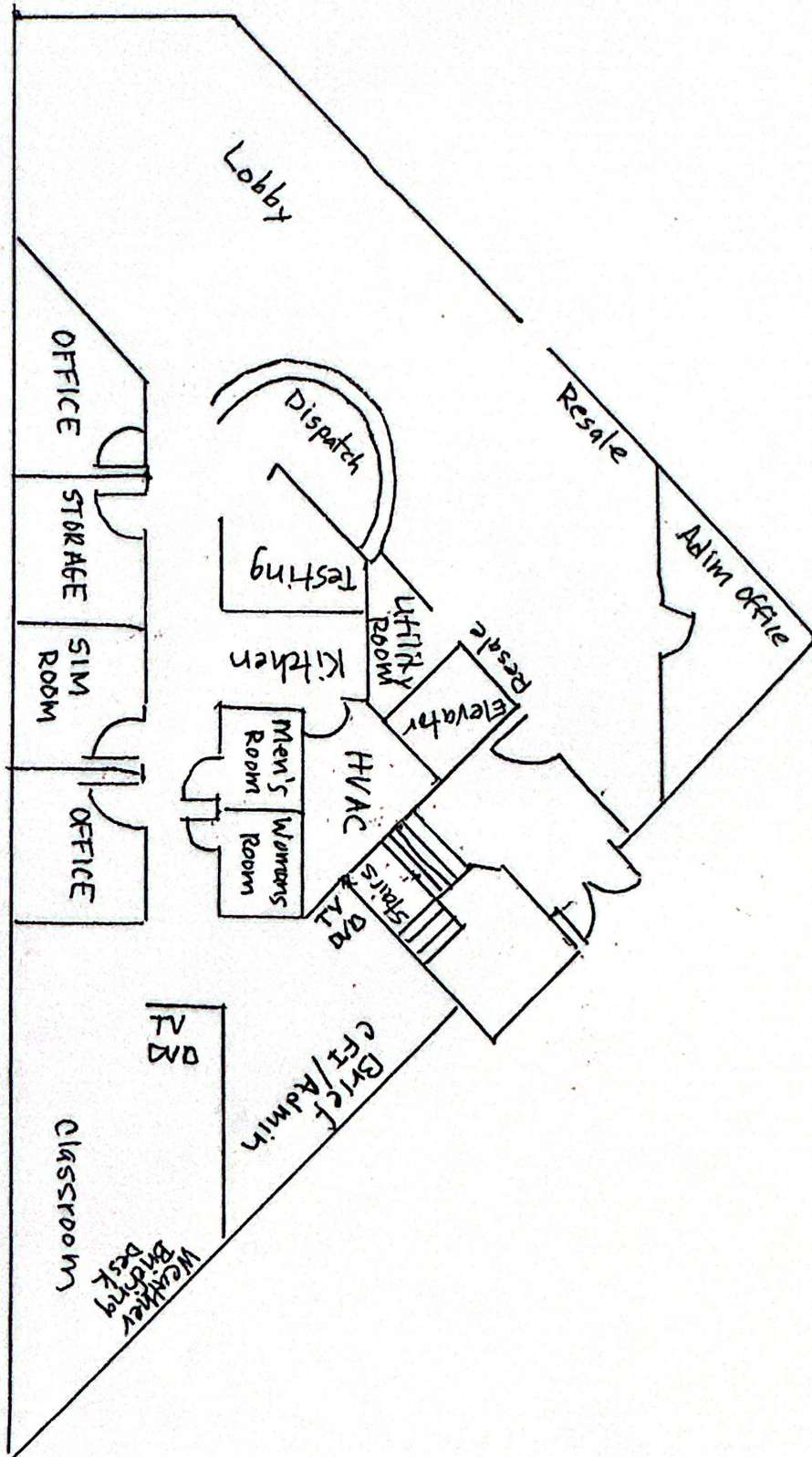
1. Reflects excellent results exceeding established standards
2. Exceeds established standards
3. Average meeting established standards
4. Does not meet established standards
5. Mandatory repeat

The following annotations shall be used in conjunction with the lesson number to denote lesson performed.

“C” Complete

“I” Incomplete (one or more lesson points not complete)

“R” Repeat



FACT FLOOR PLAN