

Florida Aviation Career Training, Inc.

List of Revisions

FACT Instrument Airplane Refresher Course ASEL 14 CFR 141 Appendix K
Revision 3
07/20/2025

Page	Change
TCO Pages ALL	Update footer to Rev 2 & updated date
TCO Page 2	Update number and size of dry erase boards and added weather briefing station location to classroom under the Ground Instructional Facilities section
TCO Page 3	Under Airport Facilities Section removed location of briefing room "off lobby" and changed location of phone line to lobby/dispatch Remove personal Information from Personnel section Remove PA28R-201 and Beechcraft Model C24R from Training Aircraft

Florida Aviation Career Training, Inc.

Airports:

Northeast Florida Regional Airport (St. Augustine) is the main base for training in this course. The airport has three hard surface runways, a control tower which operates between 7AM and 9PM local time, and meets the requirements for 14 CFR Part 141 Day/Night operations.

Airport Facilities:

Northeast Florida Regional Airport (St. Augustine) meets the requirements of 14 CFR Part 141.38. FACT has a pilot briefing area located for use exclusively by students and regular customers of FACT. A PC is in this room for access to DUATS and various on-line weather sites. Flight planning documents, authorized practice area and local course rules for operations are also displayed in this room. The lobby/ dispatch area is equipped with a telephone for calls to Flight Service for weather briefing, NOTAMS and filing/closing flight plans.

Aircraft:

Cessna Models 152 and 172 and Piper Models PA28-161 are utilized for flight training in this course. These aircraft meet the requirements of 14 CFR Part 141.39. These aircraft are also equipped for Day/Night operations in accordance with 14 CFR Part 91.205 (a), (b), and (c).

Personnel:

The Chief Instructor, Assistant Chief Instructor, and Check Instructors are designated in Operation Specification A006 Training Personnel Table 1, 2, and 3 for Florida Aviation Career Training, Inc. and meet the requirements of 14 CFR 141.35/.36/.37 as appropriate.

Flight Instructors:

Flight Instructors for this course shall hold a Flight Instructor Certificate with Airplane Single-engine and Instrument Airplane rating. In addition the flight instructor shall have logged a minimum of 250 hours total pilot time and at least 20 hours as a flight instructor. Each flight instructor must also pass an oral and flight check with the Chief/Ass't Chief Instructor prior to teaching this course.

Ground Instructors:

Ground Instructors for this course shall hold a Ground Instructor Certificate with an Instrument rating. Each ground instructor must also pass an oral check with the Chief Ground Instructor prior to teaching in the ground portion of this course.

Florida Aviation Career Training, Inc.

Grading:

Grade assignments for the individual flight lessons will utilize the method provided in the FACT student record folder as follows:

1. Reflects excellent results exceeding established standards
2. Exceeds established standards
3. Average meeting established standards
4. Does not meet established standards
5. Mandatory repeat

The following annotations shall be used in conjunction with the lesson number to denote lesson performed.

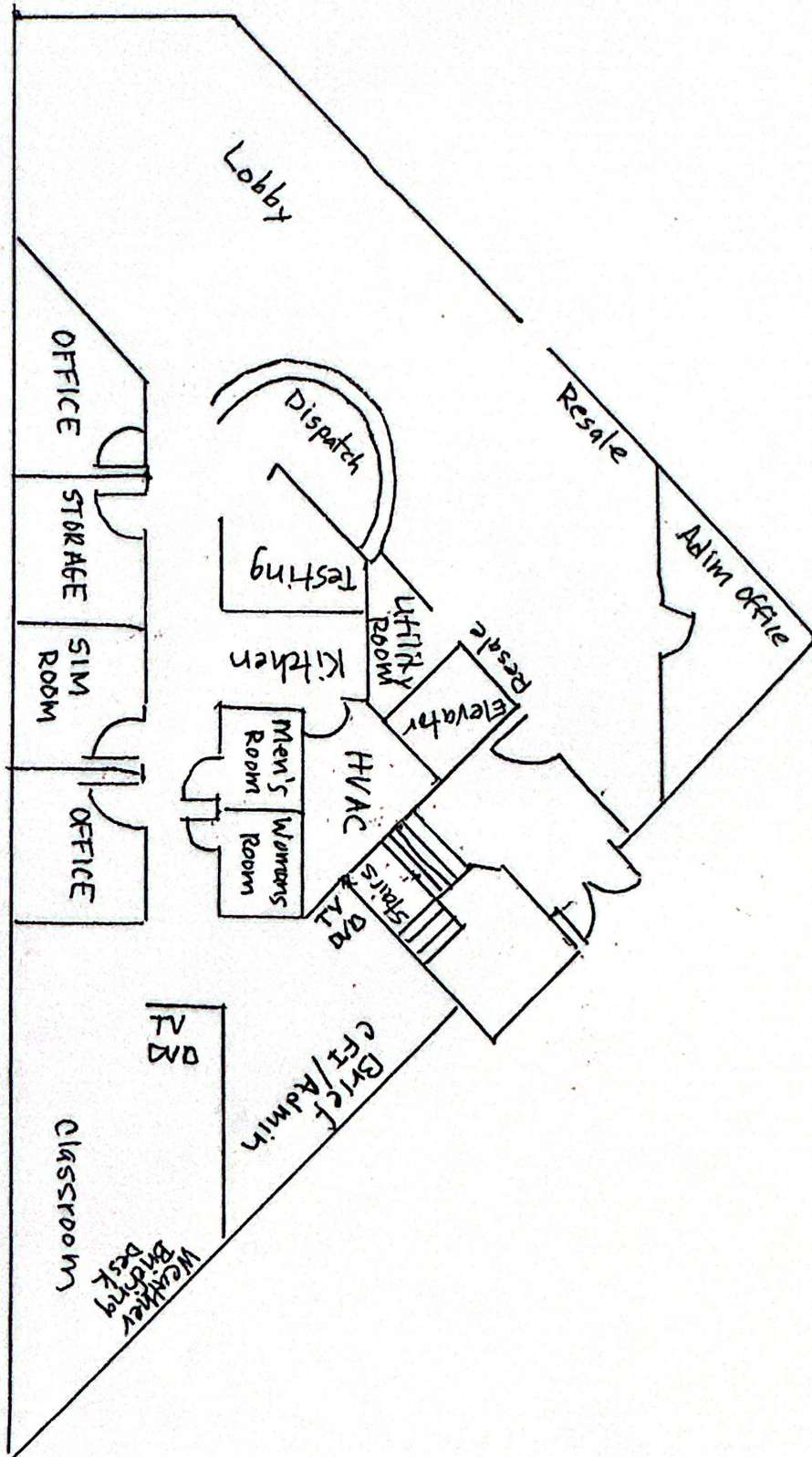
“C” Complete

“I” Incomplete (one or more lesson points not complete)

“R” Repeat

FLORIDA AVIATION
CAREER TRAINING, INC.





FACT FLOOR PLAN